

WHERE DOES OUR POO GO?

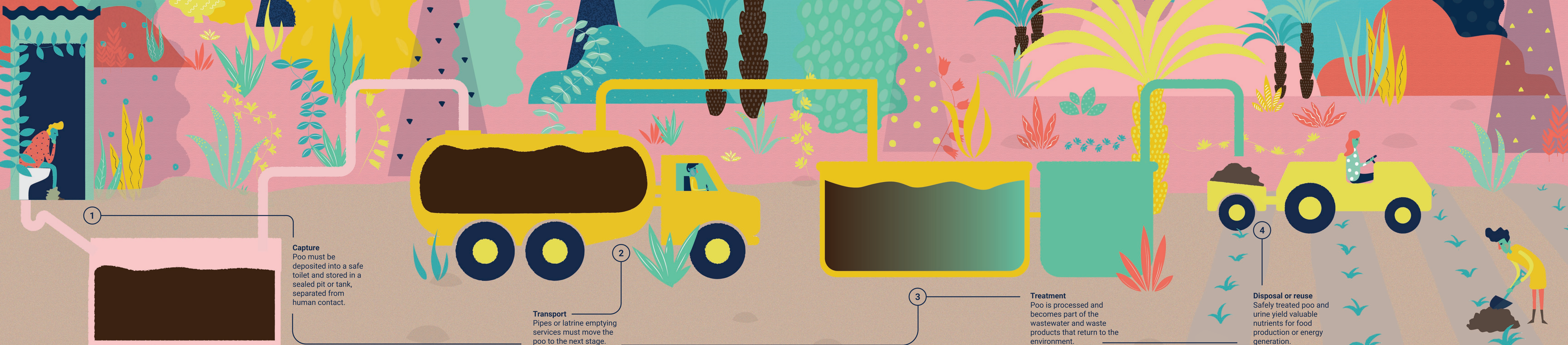


If there's one thing that unites humanity, it's the call of nature.

But depending on where we live, it's not always possible

to dispose of our bodily waste safely and responsibly.

To achieve the SDGs, we need everyone's poo to take a 4-step journey:



1

Capture
Poo must be deposited into a safe toilet and stored in a sealed pit or tank, separated from human contact.

2

Transport
Pipes or latrine emptying services must move the poo to the next stage.

3

Treatment
Poo is processed and becomes part of the wastewater and waste products that return to the environment.

4

Disposal or reuse
Safely treated poo and urine yield valuable nutrients for food production or energy generation.